



GD1500-2 2V1500AH GD SERIES-Deep Cycle Battery



Applications

- ◆ Electric tools
- ◆ Vehicle in place of walking
- ◆ Lawn mowers
- ◆ Golf trolleys and golf cart
- ◆ Portable apparatus, lights and instruments;
- ◆ Electric toys
- ◆ Illumination light
- ◆ Fire alarms
- ◆ Portable power
- ◆ Wheelchairs
- ◆ Solar energy systems
- ◆ Marine
- ◆ RV
- ◆ Medical equipments.

ISO 9001	ISO 14001	OHSAS 18001	TLC
CE	RoHS	UL	PV BATTERY

Specification

Nominal Voltage	2V	
Nominal Capacity(10HR)	1500.0AH @10hr-rate to 1.80V per cell @25°C	
Dimension	Length	403±3mm (15.87 inches)
	Width	354±3mm (13.94 inches)
	Container Height	339±3mm (13.35 inches)
	Total Height (with Terminal)	349±3mm (13.74 inches)
Approx Weight	Approx 85.5 Kg (188.495 lbs)	
Terminal	T11	
Container Material	ABS	
Max. Discharge Current	6000A (5s)	
Internal Resistance	Approx 0.50mΩ	
Operating Temp.Range	Discharge	-20~60°C (-4~140°F)
	Charge	0~50°C (32~122°F)
	Storage	-20~60°C (-4~140°F)
Nominal Operating Temp. Range	25±5°C (77±41°F)	
Float charging Voltage	2.27 to 2.3 VDC/unit Average at 25°C	
Recommended Maximum Charging Current Limit	300 A	
Equalization and Cycle Service	2.43 to 2.47 VDC/unit Average at 25°C	
	40°C (104°F)	103%
	25°C (77°F)	100%
Capacity affected by Temperature	0°C (32°F)	86%
	JYC GD series battery may be stored for up to 6 months at 25°C(77°F) and then a freshening charge is required. For higher temperatures the time interval will be shorter.	
	Self Discharge	

Constant Current Discharge Characteristics: A (25°C)

F.V/Time	15MIN	30MIN	1HR	2HR	3HR	4HR	5HR	6HR	8HR	10HR
1.60V	2037	1502	936.6	574.6	427.9	307.0	268.7	241.3	194.8	156.2
1.65V	1937	1442	924.7	553.6	410.0	296.3	266.0	235.5	186.0	154.7
1.70V	1806	1359	906.7	544.6	401.0	293.6	262.2	229.7	183.1	153.3
1.75V	1603	1223	834.9	514.7	380.0	277.4	258.8	218.0	177.3	151.6
1.80V	1380	1114	787.0	490.8	365.1	274.7	254.4	215.1	174.4	150.2
1.85V	1167	1003	727.2	463.8	347.1	253.2	239.4	203.5	165.7	141.0

Constant Power Discharge Characteristics: W(25°C)

F.V/Time	15MIN	30MIN	1HR	2HR	3HR	4HR	5HR	6HR	8HR	10HR
1.60V	3565	2737	1743	1075	797.5	577.0	534.3	465.5	370.6	311.3
1.65V	3472	2723	1734	1060	781.8	568.4	529.3	459.6	367.5	308.3
1.70V	3280	2577	1717	1044	769.9	566.2	523.0	448.9	361.8	306.5
1.75V	2922	2322	1610	988.3	742.3	537.8	515.7	426.8	350.4	303.4
1.80V	2529	2119	1531	943.8	711.6	535.3	506.6	421.7	344.8	300.9
1.85V	2156	1910	1420	893.5	677.9	495.8	478.1	399.5	327.6	283.5

Note The above data are average values, and can be obtained with 3 charge/discharge cycles. These are not minimum values.

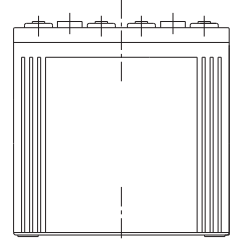
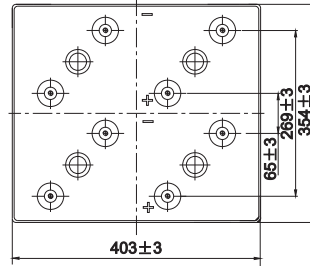
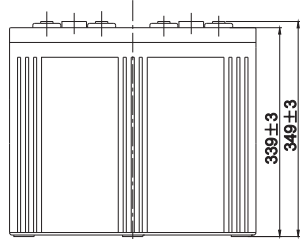
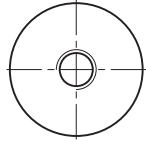
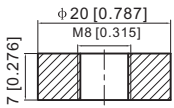


GD1500-2 2V1500AH GD SERIES-Deep Cycle Battery

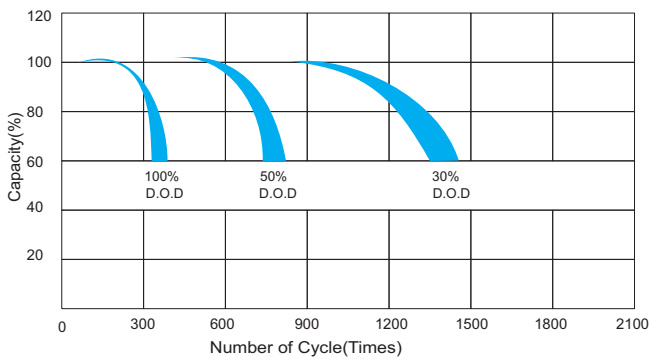
Dimensions

T11 Terminal

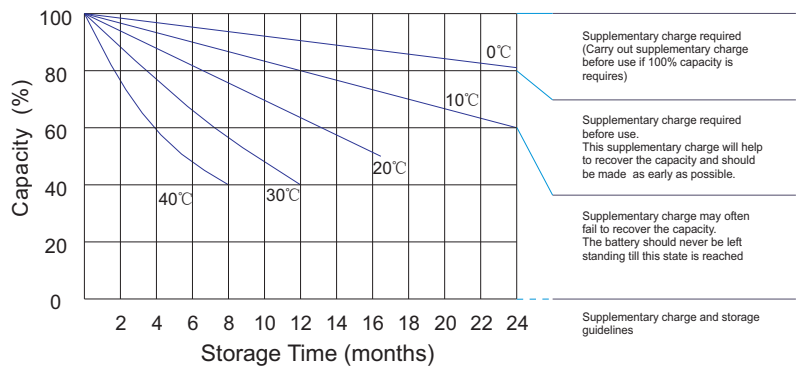
Unit: mm [inches]



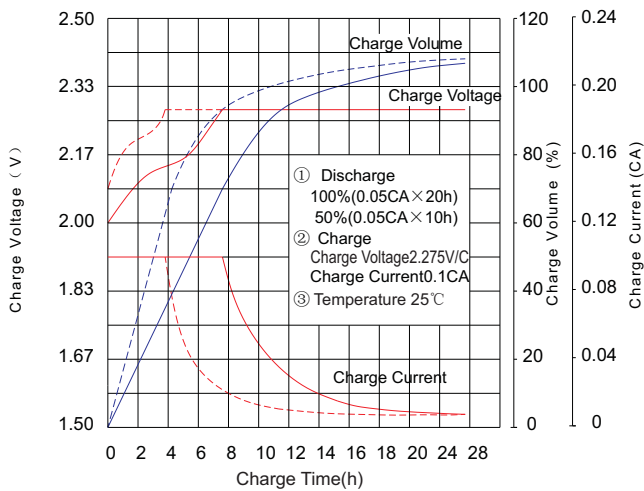
Life characteristics of cyclic use



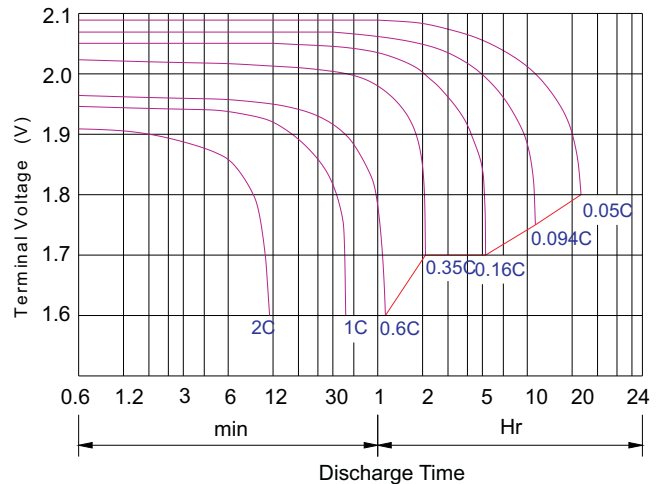
Storage characteristic



Charge characteristic Curve for standby use



Discharge characteristic Curve



JYC GD BATTERIES

This information is generally descriptive only and is not intended to make or imply any representation, guarantee or warranty with respect to any cells and batteries. Cell and battery designs/ specification are subject to modification without notice. Contact JYC for the latest information.